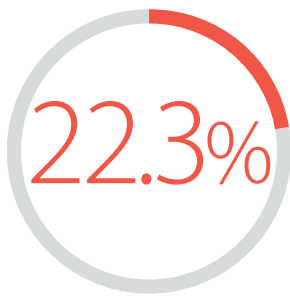




## Program Report **Africa**

# COMBONI SISTERS' HOSPITAL NZARA, SOUTH SUDAN

Project Leader: Sr Sara Antonini



PERCENTAGE OF FUNDS ERFA  
CONTRIBUTED TO OVERALL BUDGET

### 2016 ERFA Funding: \$80,000

The Nzara Hospital provides accessible, quality health services for the impoverished counties of Nzara and Yambio in South Sudan. Some essential services such as the TB and Leprosy Programs and specific laboratory facilities are available only at Nzara Hospital. The hospital is a World Health Organization accredited provider of medical care for HIV/AIDS, TB and Leprosy.


In 2016 there were 32,402 presentations as outpatients for general hospital services, which included 16,952 children under 5 years of age. Inpatient numbers totalled 6434, which included 5300 children under 5 years of age. The Antiretroviral (ART) Clinic for persons living with HIV/AIDS was attended by 1700 patients, which included 68 children and 255 patients new into the program in 2016. ART presentations included referrals from the Star Program, Yambio. A total of 126 new TB cases were treated and 365 blood transfusions dispensed, which included 311 children.

Throughout the year, the delivery of hospital services was challenged by the civil war in South Sudan with fighting at times impacting on the Nzara region. The hospital saw an increase in severe diseases amongst the vulnerable population and demand for services grew by 15% over 2015 and as high

as 40% during the critical months when other health services in the county were not functioning. In these circumstances, targets for the Health Education Outreach Program into the local district were compromised.

One of the most successful activities in 2016 was the training program in registered and midwifery nursing, where 7 trainee nurses were enrolled across Years 1 to 3. Through this scheme, within 3 years, the hospital will have enough diploma nurses to take responsibility for most of the hospital's departments, which is essential for long term sustainability. ERFA support has enabled maintenance of medical support for the STAR program, ongoing improvements in facilities, development of laboratory diagnostic capacity, improved maternal care and provision of staff training.

A highlight in 2016 was the installation of a solar powered electricity generating plant, made possible by Australian Dr Danny Doyle with the assistance of ERFA and many of its supporters. The plant, which was manufactured in Tasmania and transported to and assembled at Nzara Hospital, is providing a continuous, reliable electricity supply, which has greatly enhanced diagnostic capability and the effectiveness of medical equipment.



Providing **accessible, quality health services** for the impoverished counties of Nzara and Yambio in South Sudan

# EDMUND RICE SINON SECONDARY SCHOOL, ARUSHA, TANZANIA

Headmaster: Br Simon Kaswahili

## Program Report **Africa**

### 2016 ERFA Funding: \$14,000

Through ERFA support, Edmund Rice Sinon Secondary School (ERSSS) is enabled to operate its Student Support Program, whereby financial support is provided to local students who would otherwise not be able to attend school. During 2016, around 150 students benefitted from this scheme. The term 'local' is used intentionally, as the scheme provides educational assistance mainly for local children from Sinon village and the surrounding Maasai villages.

As a general principle, the scheme is available to students in Forms 1 to 4. Students in Forms 5 and 6 may be assisted in special circumstances. At the time of enrolment families are invited to apply for financial assistance, with the family required to demonstrate financial need and willingness to make a commitment to contributing a proportion of the set fee. This has enabled the level of support to needy families to be maintained at around 17% of students from Forms 1 to 4.

ERSSS also continues to seek ways of involving the wider local community in providing support for needy families.

The success of the program is evident in students' positive attitudes, commitment and improved academic performances, leading to enhanced opportunities for employment and further study.

During November, a 4 day workshop was conducted to address ERSSS Strategic Plan 2017 – 2022. Representatives of major ERSSS stakeholders participated, including the Christian Brothers East Africa Leadership, the Bishop of Arusha, ERSSS Board, staff, parents and students. The workshop was facilitated by Community Aid & Small Enterprises Consultancy, an Arusha based group which specializes in community development. Enhancement of academic performance, community engagement, building the capacities of ERSSS personnel and infrastructure development emerged as areas for major focus over the next five years.



PERCENTAGE OF FUNDS ERFA  
CONTRIBUTED TO OVERALL BUDGET



The success of the program is *evident in students' positive attitudes*, commitment and *improved academic performances*.



## TRANSITION SUPPORT TEAM ZAMBIA

Chair of TST Funding and Finance Committee: Br Declan Power



PERCENTAGE OF FUNDS ERFA  
CONTRIBUTED TO OVERALL BUDGET

### 2016 ERFA Funding: US\$52,518

The Transition Support Team (TST) community engagement project, located in Zambia's Western Province, is an initiative of the Christian Brothers international leadership group.

Since independence in 1964, Zambia has fallen from being one of the more prosperous post-colonial African countries to becoming one of the poorest. Extreme poverty is most pronounced in the remote rural areas, which are characterised by a mono-economy with poor infrastructure, poor access to social and economic amenities, poor water and sanitation conditions, low levels of economic activity, low literacy and high unemployment, with consequent social problems. Western Province, with a population of around 900,000, is considered to be the most impoverished in the country.

Hence, Western Province was chosen as the location for the TST. ERFA funding in 2016 enabled a group of 20 Brothers to form 3 project teams and to be trained in an advocacy and human and environmental rights approach to community engagement with impoverished communities. All members were also immersed in a local Silozi language and cultural program. critical element has been the development of relationships to build the capacity of team members and local communities to work in collaboration.

The project teams engaged in research and analysis with local communities and community leaders and key stakeholders including government officials, especially in the fields of agriculture, health, education and community development. The project teams also networked with other NGOs working in the region. As a result, the villages of Luampa and Limulunga and Senanga town were chosen as the settlements where the TST teams are located, with the teams being supported by a hub (leadership centre) in Mongu town. These settlements are predominantly rural with a basic village model of social organisation.

In response to locally identified communal needs, several projects have been designed in collaboration with local communities and will be receiving Foundation support in 2017. These include sustainable agriculture with a focus on youth employment; practical training for women and adolescent girls in market gardening and the husbandry of small livestock and poultry. A water, sanitation and hygiene project will address an obvious cause of the prevalence of disease and high mortality. A project to strengthen community care systems will address another of the consequences of extreme poverty, namely, weak or non-existent community care systems.



## 500 SUPPORTERS GROUP

Report from: Mr Patrick O'Brien, Chair

The 500 Supporters' Group was established in 2000 and initiated bi-annual sporting orientated lunches to raise funds for ERFA's Overseas Aid Fund.

The primary objective of the 500 Supporters' group is to help meet the annual operating costs of the Ruben Centre in the Mukuru slum, Nairobi. Since its establishment, The 500 Supporters' Group has become the principal fundraiser for the Ruben Centre and has raised in excess of A\$4 million.

The two 500 Supporters' Group's events each year have come to be regarded as some of the best annual lunches held in Melbourne. Always at the MCG and always featuring iconic football and racing identities such as Premiership coaches Kevin Sheedy, Mick Malthouse, Mark Thompson and racing greats Bart Cummings and Damien Oliver, it is no surprise that they sell out the MCC Members Dining Room. In May 2016, it was all-time AFL great, Leigh Matthews and in October, Australia's favourite racing expert, Francesca Cumani who helped us fill the room yet again raising close to \$355,000.

Leigh Matthews' contribution to football is unparalleled. Leigh enthralled the 500 Supporters' Group audience as he shared his thoughts on topics ranging from the importance of organisational culture to the role that luck plays in all our lives.

This latter theme was picked up by Martin Hosking, our other guest speaker at the 2016 AFL Lunch. Martin is one of Australia's foremost digital entrepreneurs and had just completed the ASX listing of his latest enterprise, Redbubble. A long-time member of The 500 Supporters' Group, he and his family took the opportunity to visit the Ruben Centre while in Kenya and it was clear they were enormously impressed by not only the culture at Ruben (both entrepreneurial and compassionate) but also the effectiveness and efficiency of its education, health and other social programs.

This theme was also at the heart of presentations given by Joel Egan and Andrew Kavanagh which so moved the 500 guests at our Spring Racing Lunch in October. Joel and Andrew were classmates at St Bernard's College in Essendon before going into commercial and residential building together. Today they are members of the leadership team at Ascot Group, a sponsor of The 500 Supporters' Group. Joel and Andrew came away from their visit to Ruben earlier in 2016 realising just how important the centre is to the Mukuru community, its families and, particularly, its young women who often had nowhere else to turn.

Their presentations certainly struck a chord with Francesca Cumani, who had also visited Kenya in recent years and is well aware of the social deprivations experienced in places like the Mukuru slum. Joining us courtesy of her connection with another long-time member of our Group, Terry Henderson, Francesca charmed all present with stories of her life growing up the daughter of an internationally famous trainer with her love of horses always front and centre. Francesca was accompanied by her mother, Sara and her brother, Matt who had recently commenced his training career in Australia.

All in all, another great year for the 500 Supporters' Group. If you'd like to know more please visit our website at [www.500supportersgroup.org](http://www.500supportersgroup.org)

Since its establishment, The 500 Supporters' Group has become *the principal fundraiser* for the Ruben Centre and has raised in excess of *A\$4 million*.





## EDMUND RICE EDUCATION AUSTRALIA Educating and Encountering Humanity Congress Edmund Rice Education Beyond Borders

Report from: Mr Brian Garrone • Executive Officer and Director  
Communications and Global Engagement EREA



Once again ERFA has partnered with Edmund Rice Education Australia (EREA) and Edmund Rice Education Beyond Borders (EREBB) to promote the development of quality and transformational education across the world, particularly in the developing world.

In 2016, ERFA was one of the main partners of the inaugural EREBB Congress that was held in Kolkata, India in October. This Congress was the first time that the majority of school leaders from Edmund Rice schools around the world have come together in the 200 year history of educating under the Charism of Edmund Rice. The theme of the Congress was Educating and Encountering Humanity.

There were key inputs from some of India's leading education and

development professionals, as well as great opportunities to learn from, with and about each other from across the world. These links will continue into the future.

Over 200 delegates from 25 countries participated in the Congress. The support of ERFA provided the opportunity for delegates from Tanzania, Kenya, West Africa, Zambia, Peru and Bolivia to attend.

A number of initiatives and working groups were developed that will enable further support for schools in the developing world, including professional development, leadership animation and governance support.

We are deeply grateful to ERFA for their ongoing support and encouragement with this global network and look forward to continuing the partnership into the future.

*"You **cannot cross the sea** merely  
by standing and staring at the water"*

Rabindranath Tagore • India Nobel Laureate



## KAIN FOUNDATION ALLIANCE

In May 2016 Edmund Rice Foundation (ERFA) and the Kain Foundation entered into a two year agreement to collectively support two development initiatives in Uganda, which form part of the Kain Foundation's longstanding Uganda Project, focused on working to create self-reliant communities in collaboration with the communities as owners of the projects.

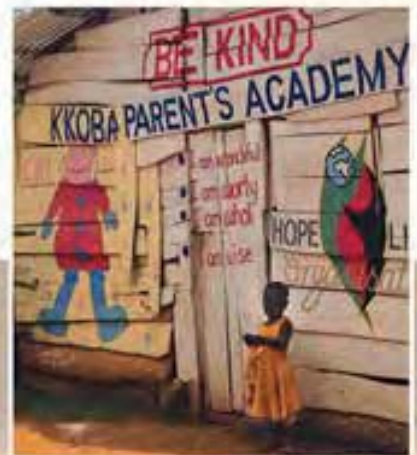
The Kain Foundation was established in 2005 in Adelaide, South Australia, and is a public ancillary fund that has been endorsed by the Australian Taxation Office as a deductible gift recipient. Kain Foundation works alongside the corporate and community sectors to create opportunities for children and youth in need in Australia and Uganda.

Under the agreement, ERFA and the Kain Foundation are supporting two projects in Uganda; a Junior Landcare Project, educating children on food and water sustainability; and a project at Kkoba Village, focused on agriculture and vocational training. ERFA and the Kain Foundation have entered into agreements with three in-country Ugandan NGOs, who are the in-country implementing partners for these projects. The Uganda Landcare Network is managing the Junior Landcare Project while the Hope Line Organisation and The Real Uganda are jointly managing the Kkoba Project.

The Junior Landcare Project is located in the Lwengo District in south west Uganda and aims to create economic opportunities for youth and their community through practical education in sustainable land usage and water management. The project focuses on school community gardens, land cultivation, water preservation and training in micro business management. The project is operating in 4 schools across the district and training about 400 students.

The Kkoba Community Project is located in the Buikwe District about 55km east of the Ugandan capital, Kampala. The project aims to improve economic, education and social outcomes for young people and families in Kkoba village, which has a population of around 2000. Project activities include the establishment of a community farm, training in agriculture and vocational training in tailoring, carpentry and automotive repair. It is hoped that some of the profits from the farm will enable the development of the village school as a full primary school.

Through their alliance, ERFA and the Kain Foundation have joined forces to share knowledge, experience and resources to promote education and economic development for two impoverished rural communities in Uganda. While the Kain Foundation has responsibility for funding, both organisations are sharing responsibility for management, monitoring and evaluation of the projects.



Focused on working to create **self-reliant communities** in collaboration with the communities.



## PROJECT KENYA

Report from: Mr John McKenna

Once again, those wonderful people who support the 'Project Kenya' initiative for Br. Beausang Catholic Centre in Embulbul, Nairobi were most generous in their commitment during 2016. Newsletters to these supporters throughout last year highlighted the school's continuous improvements in a range of areas under the experienced and careful leadership of principal, Mr. Peter Shanahan. Many others contributed to the school's ongoing viability with fundraising initiatives at Catholic Ladies College, Eltham, St. Bernards College in Essendon and of course from the Edmund Rice Foundation.

But Project Kenya continues its sole objective of keeping children from the slums in this wonderful school and to that end some 295 students were sponsored by over 250 donors. Of these 295 children sponsored, 204 were Secondary students and 91 were in the Primary school. Exactly \$119,688 was collected between July 2015 and June 2016 for this purpose. Without Project Kenya, Br. Beausang school might survive by taking mainly fee paying students, but those 295 students would not have had an education so again, **MANY MANY THANKS** to all our generous supporters.

Project Kenya continues its sole objective with Br. Beausang school, keeping children from the slums. ***295 students were sponsored*** by over 250 donors.



## TERRACE TIMOR NETWORK

Report from: Ms Nena Morgante and Mr Paul Higgins

The Terrace Timor Network (TTN) is a group of parents, past-parents and friends of St Joseph's College, Gregory Terrace, who provide support for Comunidade Edmund Rice (CER) programs in the Ermera District in East Timor. This support comes in the form of skill sharing, capacity building, empowerment and funding for projects including Kolega cards, coffee, vanilla and the trades training workshop.

In 2016, TTN celebrated its eleventh year of walking in solidarity with the people of Timor as they journey along the evolving path of rebuilding their nation, after a quarter century of military occupation. This year also marked the final year for Paul and Bernadette Higgins in their roles as President of TTN and Justice Products Coordinator. Paul and Bernadette have shared their passion, energy and expertise over many years, working tirelessly for the people of Timor, and touching the hearts and minds of the people they've encountered during this time. The legacy of their work, its breadth and depth, is evident in Timor as well as in schools and organisations throughout Australia.

TTN continued to focus on sustainability in 2016, to ensure that the programs remain strong and continue to form a reliable source of income for the villages. In partnership with ERFA, TTN supported the employment of a Timorese Economic Development Manager, Belina Sanches Viana. Belina was responsible for communicating the progress and needs of the locals working in the vanilla, coffee, cards and trades training workshop projects.

The Taraso trades training workshop was a major initiative in 2016. Under the leadership of Paul Higgins, a TTN working group travelled to Taraso at Easter to help supervise the erection of columns and a roof and truss system designed by MPN Consulting and fabricated in Timor.

The Trades Workshop project shell is now complete and ready for the next stages of a training program to start.

Brother Peter Coe from CER has provided essential project management of the construction to date. This project is aimed at assisting the Timorese in remote villages to learn key trades skills like welding, steelwork, block laying, and basic electrical wiring, as well as on the job training during construction and fitout of this building. Installation of ten 235-watt solar panels by TTN supporter company Roof Juice, will also form part of the training. CNEFP, a Timorese vocational training institute in Tibar, are partnering with TTN to deliver this training in the villages.

TTN remains very proud of the Kolega range of organic coffee, roasted and packaged in partnership with Blue Sky Coffee. Kolega Coffee is sold through TTN's re-vamped Justice Products website ([www.justiceproducts.org](http://www.justiceproducts.org)) as well as at various events. The Kolega Cards program employs sixty-five women producing around one hundred cards per day in four teams of fifteen women. Each team works one day per week and the program provides income and important social engagement in the community.

In 2016, eight new designs were launched, under the 'Textures of Timor' range. These cards are created using entirely Timorese sourced components and feature beautiful locally handmade papers.

TTN's Kolega Cards and Coffee products were purchased by schools and organisations with a social justice interest. This year saw a number of schools participate in promoting Justice Products within their communities supported by a team who helped them "learn the story, become part of the story and change the story". St John Fisher College celebrated the first anniversary of their Kolega Café, joining stalwarts Nudgee College and newcomer Gregory Terrace.

Many schools, churches and businesses signed up for the 'Two days of work challenge', which highlights the fact that every pack of cards sold provides two days of work for the card ladies in Timor and breaks the poverty cycle – one card at a time. Schools involved include Gregory Terrace, Lourdes Hill, St Edmunds Ipswich, St James, Stuartholme, St Edmunds Wahroonga and St Gabriel's near Sydney.

The second year of the "Vanilla Seeds of Hope" project continued successfully, with funding through ERFA. Vanilla bean is a high potential cash crop, ideally suited to growing in Timor. The TTN trained local project officers have engaged with numerous community groups, established three demonstration sites, trained nearly one hundred farmers in composting techniques and identified twenty new growers with suitable land and water. From a desktop research project with the University of Queensland in 2014, this project is already setting a high standard for community engagement and results.

The month of May was a busy time for TTN, as we commemorated Timor Independence Day on May 20. Our Parte Estrada 'Festa' was also held in May, raising necessary funds for projects in Timor, as well as raising awareness in the community. The Festa was held at the end of the inaugural Timor-Leste Week at St Joseph's College, Gregory Terrace. Flag raising, Kolega Café launch, Bro Band day and a spirit assembly were a few of the activities which enriched the community's mutual relationship with our friends in Timor-Leste through a deeper understanding of their lives. Festa 2017 will be held on Saturday May 27th.

TTN looks forward to 2017, and gives thanks to all those involved in the journey; past, present and future.





## ZIMELE

Report from: Mr Tom Purcell, Founder

Zimele was founded in 2008 by Tom Purcell who had just attended a two week conference in South Africa, the theme of which was reconciliation and forgiveness with a specific focus on the struggle for freedom and the end of apartheid. He was inspired by the heroic work of Steve Biko, a young student activist who had set up an organisation named Zimele, which is Zulu for 'stand on your own feet'. Zimele works in partnership with the St Kevin's College community and the Edmund Rice Foundation to enhance the dignity of individuals and communities through the empowerment of education and to assist in the provision of basic health needs to its project communities.

In 2016, Zimele continued to support its three main outreach ministries, the Education for Life Centre in Eldoret, North West Kenya; the Star Support Project in Yambio, South Sudan; and the Br Beausang school in Embul-Bul, Nairobi, Kenya. It conducted its two main fund raising functions, the well-supported Annual Zimele Dinner

at St Kevin's College, Toorak, on Saturday September 3, and the very successful inaugural Twenty Four Hour Challenge at St Kevin's College on the weekend of September 10/11. It also managed to secure education sponsorships for Br Beausang students as well as children of women living with HIV at the Education for Life Centre in Eldoret. Additional money is raised from donations and from the sale of beads crafted by the women at Education for Life in Eldoret and the Kibera slum in Nairobi. The annual Zimele Walkathon was postponed and is to be held on Sunday March 19th, 2017.

The Zimele Council were very pleased to be able to announce that in excess of A\$130,000 was raised in 2016 and passed on to the Edmund Rice Foundation to support Zimele's key ministries in East Africa. Zimele depends significantly on the support of St. Kevin's College and is grateful for the support it receives from the Headmaster Stephen Russell and the entire St Kevin's community.



Enhancing the dignity of individuals and communities through the ***empowerment of education*** and to assist in the provision of basic ***health needs*** to its project communities.



# GONE FISHING IMMERSION PROGRAM AND ALUMNI

Reflection from: Ms Julie and Mr Ben Allen

Twice a year, a small group of diverse professionals from around Australia are challenged to experience the Gone Fishing Immersion program in Nairobi, Kenya.

## An awakening

While we had been warned, there is simply no life experience preceding that can prepare you for the challenges and growth that this program provides.

We flew half way around our world, just to walk with the beautiful people of Nairobi who try and survive in some of the worst living conditions on earth.

To be honest, the purpose of the trip was a little undefined before we left, other than a genuine intent to try and help some people in desperate need. But the deeper purpose of the program revealed itself the more we ventured into the slums and the homes of some of the 2 million people that live in Kibera and surrounding slums.

This experience was one of extreme sensorial bombardment and even more uncomfortable internal reflection. Whilst we did indeed directly lend a hand during our time in the ERFA projects, the truth is that we were the ones that were uplifted and supported by the people of Nairobi. This humble community of people, opened up their lives and hearts unconditionally to educate each participant about the reality of their world.

Their selflessness, humility and honesty were both heart breaking and eye opening.

So, on reflection, the real purpose of our visit was to create an awakening. We saw with our own eyes what was previously unimaginable and incomprehensible. We were challenged to understand compassion and hope in a new light and to question our thoughts about equality and justice and all in our own backyard.

The grit of the slums tended to sand back the plaque of indifference that can build up over our hearts after years of living a comfortable and modern lifestyle.

## The beacons of hope

As each of us traversed the escarpment, landscape, and destitution of the Kibera, Mukura and Embulbul slums, it was obvious that the beacons of light came from two main sources; the hope and support provided by the ERFA projects and the beautiful and inspiring children.

The positive impact of the ERFA initiatives and projects in these communities cannot be over stated. From the humble but inspiring Mary Rice Centre for the most neglected and yet loved children with disabilities in Kibera, to the more sophisticated integrated models of the oasis of the Ruben Centre or Brother Beausang school. It's hard to imagine what life in these communities would be like without these beacons of hope making a difference every single day.

The other source of light and hope emanated from the children of the slums. As we traversed the labyrinth of their neighbourhood, it was the children who constantly pulled us from our constant personal struggles with their delightful greetings or enthusiasm to rush and hold your hand or give you a hug. They brought our focus to their attention. Their presence and energy drew our thoughts to think about the future – their future and what it would look like without the help of organisations such as ERFA and the individuals that they introduce.

The children constantly humbled us with their irrepressible spirit, sense of fun, hope and resilience.

## The outcomes. . . beautiful friendships

When it was time to reluctantly walk away, we did so without turning our backs. Our heads and hearts were so filled to the brim with the love of people who had literally nothing to give but a smile and the touch of hands.

## Partnership Reports and Initiatives

Their souls, in turn, were rightly filled with the belief that we were there to tell the world about their stories, struggles and plights and that in doing so, we could make a difference.

Although this was an outstanding outcome, there was another personal gain. We unexpectedly, also took away some of the most cherished and beautiful friendships of our lives.

In ten short and powerful days, we had formed deep and lifelong friendships with each of our fellow Gone Fishing participants and wonderful leaders. The 10 strangers who had come together into the slums of Nairobi shared intense moments where words were inadequate and hearts were broken. We learnt to lean heavily on each other, each day and shared whole-hearted tears and laughter in equal measure.

## A new understanding

The Gone Fishing program made us question, our preconceptions, ideology, beliefs and faith.

Looking out over Kibera on the last day, we were still wondering how a loving and all powerful God could allow his people, in our lifetime, to live like this? The answer to this quiet prayer came back to us, instantly and clearly. Why ask God, when we should ask ourselves instead? How could we, loving and educated people allow others to live like this, when we have the power to work together to at least change some of it. . . . . One community, one family, one little hopeful hand at a time.

Naively we had ventured, but by walking side by side with the people of Nairobi, our senses and souls were awakened and subsequently our lives, hearts and focus were forever changed... this is the essence of the Gone Fishing Leadership Immersion.



## ERFA 2016 FUNDRAISING EVENTS

ERFA deeply appreciates the supporter groups and individuals who so generously donate their time to raise money through appeals and events for the communities ERFA supports. In addition to events convened by ERFA supporter groups detailed in this Report, fundraising initiatives such as the Ruben Appeal (Bernadette Barlow) and events including the Abruzzo Club Dinner Dance (Dr Danny Doyle), the Bitu-Mill Golf Day (Frank Artufel), the Bledisloe Cup event (Peter Bechtel) and the RuYi Restaurant Dinner (Marianne Roux) all contribute vital funding to community programs.

ERFA staff and state Chapters also convene fundraising events with the support of dedicated volunteers. In 2016, these included:



### 2016 Mary Rice Lunch Sydney • June 2016

A volunteer group led by Julia Pignatelli and Jacquie Folsom convened the first Ladies' Luncheon in Sydney in 2016. The event was a sellout with 120 guests and was held at The Hub Bar and Restaurant in Coogee. Guest speaker, Sam Baker of Brisbane's Rainbow of Hope Committee spoke of her experiences visiting East Timor and of the work she and others have done in raising much needed funds for building and equipping a new TEKA (kindergarten) in the remote hill area behind Dili. Through generous donations and sale of auction items, the event raised \$5,000 to support programs in Papua New Guinea and East Timor. Following the lunch Julia and Jacquie participated in ERFA's Gone Fishing immersion to Kenya and look forward to continuing the Sydney luncheon into the future.

### 2016 Prawns on the Lawn Long Lunch at Ballymore Brisbane • 6 May 2016

The inaugural Prawns on the Lawn lunch was a sell out with 500 people attending the event at the home of Queensland Rugby Union, Ballymore Stadium. The lunch at the hallowed grounds raised \$45,000 of vital funds to support opportunities for children with disability in Kenya and Australia through the power of education and sport. Guests enjoyed a lunch like no

other, long tables of 50 with bottomless bowls of the most amazing prawns on offer at the back of Ballymore.

The event was emceed by Greg Martin, media personality and former Australian rugby union player, entertainment was provided by local Brisbane band, The Manilows and children from the GingerCloud Envisioning Foundation's Modified Rugby Program played demonstration matches. Prior to the lunch, a wonderful team of volunteers, including team members from Entice Projects, took part in a huge working bee at Ballymore to ready the site. The event was delivered by a wonderful committee of volunteers led by Angela Curtain.



### 2016 Mary Rice Lunch Melbourne • 7 October 2016

The fourth annual Mary Rice Lunch held at the Treacy Centre in Parkville was a great success with 130 committed women raising awareness and funds for the children of the Mary Rice Centre. The guest speaker was Julie Madden, a former participant of ERFA's Gone Fishing immersion program. Julie shared the inspirational story of her time at the Mary Rice Centre, reflecting on the devastating poverty and extreme hardship of the Mary Rice children and their families who reside in the Kibera Slum. The event was emceed by Anne Allison and guests were entertained by Emily McPherson, from St Columba's College along with the amazing vocalists from St Kevin's College (made possible

through the dedicated head of music Daryl Barclay). The luncheon was run by a dedicated volunteer team comprising Sally Burgoyne, Catherine Lynch, Jean-Marie Menzies, Amy Graham, Kerrie Gilbert, Madeleine Chiller and Natasha Fuller and in excess of \$30,000 was raised.



### 2016 Annual Gala Dinner, Brisbane • 4 November 2016

ERFA's Brisbane dinner was back at the Royal International Convention Centre in 2016. Over 650 guests arrived to cocktails donated by Katarzyna before being treated to a Kenyan entrée and East Timorese main meal. African drumming and a Maasi warrior visit created atmosphere, and stunning theming by Lantern Love featured elements of the countries in Africa, Australia, East Timor and the Philippines to where the \$49,000 in funds raised were directed. The guest speaker, Marilyn Trad, gave a very moving account of her experiences on the Gone Fishing immersion and the programs supported by ERFA in East Africa. The dinner was emceed by ERFA Qld Chapter Chair, Ed Phelan and entertainment was provided by Brisbane band, The Manilows. Once again, many volunteers contributed to the planning of the dinner and students from St James' College, St Joseph's College Gregory Terrace and St Columban's College gave their time to make the evening a wonderful success.

# Finance Report

Concise Consolidated Annual Financial Report For the year ended 31 December 2016

## Where the money came from and where it went

In 2016, funds raised were \$2,722,781 with \$1,230,063 (39%) being raised through donations and \$1,026,486 (33%) through Edmund Rice Education Australia (EREA) school Parent Support Scheme (PSS) contributions. The balance of funds were raised through fundraising and other income sources.

Total revenue decreased by \$502,130 or 13.9% as compared to 2015. This decline was largely due to reduced fundraising efforts as the focus of key personnel was in seeking Department of Foreign Affairs and Trade (DFAT) accreditation. Key indicators are:

- A decrease of \$376,891 (13.3%) in donations income largely due to a decrease in funds received from the public (a fall of \$582,530 or 28.9%). This was offset by an increase in EREA PSS income of \$205,640 (25.1%).
- Decrease in investment income of \$23,599 (16.5%) due to cash reserves being allocated to Project funding
- Fundraising income, reduced by \$44,582 (7.8%) largely due to the reduction in the number of functions and the number of participants

Funding to programs decreased by \$296,572 (10.6%) during the year primarily due to:

Australian Edmund Rice Ministries		
Rice Ministries	\$76,000	24.0%
Edmund Rice Secondary College Sinon		
College Sinon	\$66,674	367.3%
Edmund Rice Comunidade East Timor		
East Timor	\$62,781	41.4%
Edmund Rice Foundation The Philippines		
The Philippines	\$43,365	13.2%
	\$248,820	

- Fundraising costs decreased by \$157,960 (29.1%) as a result of the reduction in the number of functions and the number of participants at functions.

## Financial Results

The deficit for the year was \$213,958 compared to a deficit in the prior year of \$35,609.

## Performance Measures

**Administration Ratio** – A useful measure of the Consolidated Entity's administrative efficiency is its administration cost ratio. The ratio expresses administration costs (including depreciation) as a percentage of total expenditure. For 2016 the ratio was 8.3% (2015: 6.2%).

**Fundraising cost ratio** – Another ratio often given attention is the fundraising cost ratio. There are different definitions of this ratio used throughout the not-for-profit sector. In order to assess the organisation's performance accurately and to provide a comparison with other non-government organisations, the following two fundraising cost ratios have been used:

- Fundraising costs as a percentage of total revenue. The ratio in relation to total revenue for 2016 was 12.4% (2015: 15.0%).
  - Fundraising costs as a percentage of fundraising income (excluding grants)
- Fundraising income, primarily from functions and events, represents 17.0% (2015: 15.9%) of the total annual revenue. The ratio in relation to all funds raised from fundraising events for 2016 was 72.8% (2015: 94.6%). Fundraising costs are comprised of facility hire, event management, catering and promotional activities for the specific events and hence account for a significant percentage of income. Donations generated from these activities are recorded separately in the accounts and are captured together with investment, bequest and grant income in the remaining 83.0% (2015: 84.1%) of annual revenue.

The meaningfulness of this ratio however, is affected by the range of fundraising activities undertaken in the respective financial periods. In Edmund Rice Foundation (Australia)'s case this range, and the associated cost rates, varies markedly between recruitment of donors to particular programs and special events.

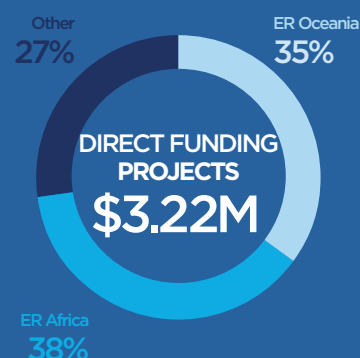
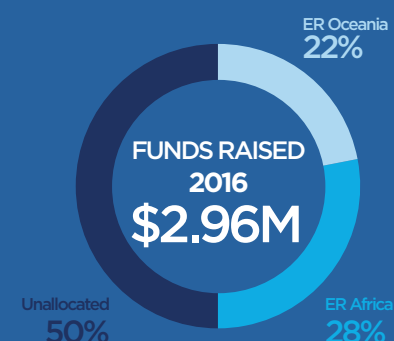
Fundraising activities are worth pursuing provided they generate a worthwhile surplus over time that can be devoted to achieving Edmund Rice Foundation (Australia)'s goal of improving the lives of disadvantaged peoples.

It is therefore necessary to be cautious when comparing the fundraising cost ratio over time and with the corresponding ratio of other charities that may have quite different ways of funding their activities and reporting their results.

## Events subsequent to reporting date

No matters or circumstances have arisen since the end of the financial year, which have or may significantly affect:-

- the operations of the consolidated entity;
- the results of those operations; or
- the state of affairs of the consolidated entity, in subsequent financial years.

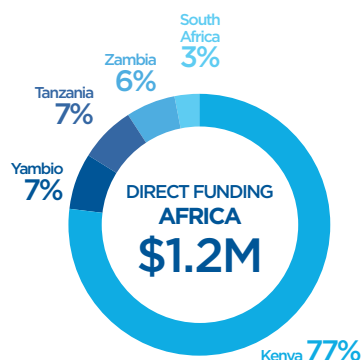
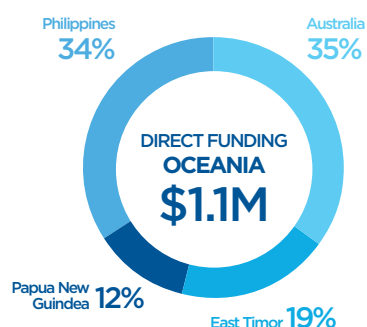
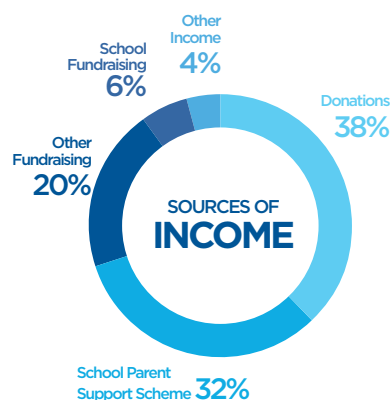




# Finance Report

EDMUND RICE FOUNDATION (AUSTRALIA) • ABN 28 153 110 055

## Consolidated Statement of Income and Expenditure for the year ended 31 December 2016



### REVENUE

#### Donations and gifts

Monetary

Non-monetary

Bequests and Legacies

Fundraising Income

Grants

Department of Foreign Affairs and Trade

Other Australian

Other overseas

Investment income

Other income

Revenue for International Political or Religious Adherence

Promotion Programs

**TOTAL REVENUE**

### CONSOLIDATED

**2016**

**2015**

**\$**

**\$**

2,460,891

2,837,782

-

-

3,000

7,484

529,636

574,218

-

-

-

50,000

-

3,000

119,805

143,404

425

-

-

-

-

-

3,113,757

3,615,888

### EXPENDITURE

#### International Aid and Development Programs Expenditure

Funds to international programs

Non-Monetary Expenditure

Program support costs

#### Domestic Aid and Development Programs Expenditure

Funds to domestic programs

Program support costs

Community education

Fundraising costs (International and Domestic)

Public

Government, multilateral and private

Accountability and Administration

**Total International Aid and Development Programs Expenditure**

International Political or Religious Adherence Promotion

Programs Expenditure

**TOTAL EXPENDITURE**

**EXCESS OF REVENUE OVER EXPENDITURE**

2,073,603

2,376,175

-

-

93,901

10,683

423,000

417,000

-

-

124,146

19,358

385,404

543,364

-

-

284,664

222,751

3,384,718

3,589,331

-

-

3,384,718

3,589,331

(270,961)

26,557

## Statement of Comprehensive Income for the year ended 31 December 2016

EXCESS OF REVENUE OVER EXPENDITURE	(270,961)	26,557
<b>Other Comprehensive Income</b>		
(Loss)/Gain on revaluation of financial assets	57,003	(62,166)
<b>TOTAL OTHER COMPREHENSIVE (LOSS)/INCOME FOR THE YEAR</b>	57,003	(62,166)
<b>TOTAL COMPREHENSIVE (LOSS)/INCOME FOR THE YEAR</b>	(213,958)	(35,609)

During the financial year, Edmund Rice Foundation (Australia) received no income for international political or religious proselytisation programs.

## Consolidated Statement of Financial Position as at 31 December 2016

	CONSOLIDATED	
	2016	2015
	\$	\$
<b>ASSETS</b>		
<b>Current assets</b>		
Cash and cash equivalents	2,649,924	3,087,276
Trade and other receivables	94,063	173,060
Other	12,210	22,124
<b>Total current assets</b>	2,756,197	3,282,460
<b>Non-current assets</b>		
Financial assets	1,344,086	1,286,728
Plant & equipment		21,520
<b>Total non-current assets</b>	1,344,086	1,308,248
<b>Total assets</b>	4,100,283	4,590,708
<b>Liabilities</b>		
<b>Current liabilities</b>		
Trade and other payables	73,569	218,134
Provisions	2,817	11,634
Interest bearing liabilities	50,000	123,084
<b>Total current liabilities</b>	126,386	352,852
<b>Non Current Liabilities</b>		
Non interest bearing liabilities	-	50,000
	-	50,000
<b>Total liabilities</b>	126,386	402,852
<b>Net assets</b>	3,973,897	4,187,856
<b>Equity</b>		
Settlement	100	100
Retained surplus	539,392	597,171
Reserves	3,434,405	3,590,585
<b>Total equity</b>	3,973,897	4,187,856



# Finance Report

EDMUND RICE FOUNDATION (AUSTRALIA) • ABN 28 153 110 055

## Consolidated Statement of Changes in Equity for the Year Ended 31 December 2016

Consolidated	Settlement Funds	Accumulated Funds Available for Future Use	Bequest Reserve	Financial Assets Reserve	Specified Purpose Reserves	Total
	\$	\$	\$	\$	\$	\$
<b>Balance 1 January 2015</b>	100	662,408	1,205,588	122,784	2,229,018	4,219,898
Adjustment to Opening Balance of Bequest and Financial Asset Reserves	-	46,141	(32,284)	(12,136)	1,846	3,567
Surplus attributable to Edmund Rice Foundation (Australia)	-	26,557	-	-	-	26,557
Other Comprehensive Income for the year	-	(62,166)	-	-	-	(62,166)
Transfers to Reserves						
Bequest Reserve	-	(7,484)	7,484	-	-	-
Financial Assets Reserve	-	62,166	-	(62,166)	-	-
Specified Purpose Reserves	-	17,103	-	-	(17,103)	-
Distributions from Reserves	-	(147,554)	-	-	147,554	-
<b>Balance 31 December 2015</b>	100	597,171	1,180,788	48,482	2,361,315	4,187,856
Deficit attributable to Edmund Rice Foundation (Australia)	-	(270,961)	-	-	-	(270,961)
Other Comprehensive Income for the year	-	57,003	-	-	-	57,003
Other Comprehensive Loss for the year	-	-	-	-	-	-
Transfers to Reserves						
Bequest Reserve	-	(3,000)	3,000	-	-	-
Financial Assets Reserve	-	(57,003)	-	57,003	-	-
Specified Purpose Reserves	-	216,182	-	-	(216,182)	-
Distributions from Reserves	-	-	-	-	-	-
<b>Balance 31 December 2016</b>	100	539,392	1,183,788	105,485	2,145,133	3,973,898

## Consolidated Statement of Cash Flows for the year ended 31 December 2016

	2016 \$	2015 \$
<b>Cash flows from operating activities</b>		
Cash receipts in the course of operations	2,957,394	3,482,732
Cash payments in the course of operations	(3,408,760)	(3,584,357)
Interest received	38,493	51,288
Investment Income	81,312	92,116
<b>Net cash provided by operating activities</b>	(331,561)	41,779
<b>Cash flows from investing activities</b>		
Investment of Bequest Income	-	(5,000)
Sale of Motor Vehicle	40,909	17,877
Purchase of Motor Vehicle	(23,616)	(24,577)
<b>Net cash used in investing activities</b>	17,293	(11,700)
<b>Cash flows from financing activities</b>		
Proceeds from borrowings	-	360,000
Repayment of borrowings	(123,084)	(186,916)
<b>Net cash provided by financing activities</b>	(123,084)	173,084
<b>Net increase in cash held</b>	(437,352)	203,163
<b>Cash and cash equivalents at the beginning of the year</b>	3,087,276	2,884,113
<b>Cash and cash equivalents at end of the year</b>	2,649,924	3,087,276

## Consolidated table of cash movements for designated purposes for the year ended 31 December 2016

	Cash available at the beginning of the financial year	Cash Received (net of administration)	Cash Disbursed during year	Transfers between Funds	Cash available at the end of the financial year
	\$	\$	\$	\$	\$
Funds Raised for					
Edmund Rice Oceania General	83,619	86,934	(15,199)	(155,354)	-
Edmund Rice Oceania Domestic Projects	1,482	88,156	(394,300)	308,971	4,309
Edmund Rice Oceania Developing Nations Projects	28,434	246,531	(751,775)	480,036	3,226
Edmund Rice African Developing Nations Projects					
Ruben Centre (Kenya)	386,001	426,450	(433,579)	-	378,872
Other African Projects	1,460,895	546,799	(947,439)	49,438	1,109,693
Total for other purposes	1,126,845	1,826,561	(1,127,591)	(671,991)	1,153,824
	3,087,276	3,221,431	(3,669,883)	-	2,649,924

The consolidated entity is a signatory to the Australian Council for International Development (ACFID) Code of Conduct, and as such has an obligation to provide the following information which demonstrates adherence to the Code's financial standards. For further information on the Code please refer to the ACFID Code of Conduct Guidance Document available at [www.acfid.asn.au](http://www.acfid.asn.au).

The only appeal which represented more than 10 percent of the total cash raised in 2016 was for the Ruben Centre.

The purpose of the table of cash movements is to ensure the accountability of cash raised for designated purposes.

The table of cash movements is used to disclose the amount of cash that has been raised for a designated purpose, disbursed and remains unspent at the end of the year.

Cash raised refers to cash donations and other income actually received during the year.

Cash disbursed refers to expenditure actually paid out during the year.

### Notes to the consolidated summary financial report for the year ended 31 December 2016

The concise financial report is an extract from Edmund Rice Foundation (Australia)'s consolidated full financial report for the year ended 31 December 2016.

The financial statements and specific disclosures included in the concise financial report have been derived from the full financial report.

The concise financial report does not and cannot be expected to provide as full an understanding of the financial performance, financial position and financing and investing activities of Edmund Rice Foundation (Australia) and its trusts as the full financial report.

A full description of the accounting policies adopted by Edmund Rice Foundation (Australia) may be found in the full financial report available at [erf.org.au](http://erf.org.au).

The concise financial report is presented in Australian dollars.

## Edmund Rice Foundation (Australia) ABN 28 153 110 055

### Responsible Entities' Declaration

The responsible entities declare that in the responsible entities' opinion:

- there are reasonable grounds to believe that the registered entity is able to pay all of its debts, as and when they become due and payable; and
- the concise financial statements and notes for the year ended 31 December 2015
  - comply with Australian Accounting Standard AASB 1039 Concise Financial Reports; and
  - have been derived from and are consistent with the full consolidated financial report of Edmund Rice Foundation (Australia) and its trusts
- comply with the requirements set out in the ACFID Code of Conduct

This declaration is made in accordance with a resolution of the Board of Directors and signed for and on behalf of the Directors by:

  
Director

  
Director

Dated at BRISBANE this 27th day of MARCH 2017



# Auditors Report



**PITCHER PARTNERS**  
ACCOUNTANTS • TAX ADVISORS • BUSINESS CONSULTANTS

**INDEPENDENT AUDITOR'S REPORT  
TO THE MEMBERS OF EDMUND RICE FOUNDATION (AUSTRALIA)  
ABN: 28 153 110 055**

**Report on the Audit of the Summary Financial Report**

We have audited the summary financial report of Edmund Rice Foundation (Australia) ("the Company"), which comprises the consolidated statement of financial position as at 31 December 2016, the consolidated statement of income and expenditure, consolidated statement of other comprehensive income, consolidated statement of changes in equity and consolidated statement of cash flows for the year then ended, notes comprising a summary of significant accounting policies and other explanatory information including consolidated table of cash movements are derived from the audited financial report of Edmund Rice Foundation (Australia) for the year ended 31 December 2016. We expressed a qualified auditor's opinion on that financial report dated 27 March 2017.

In our opinion, except for the effects of the matter described in the Basis for Qualified Opinion section of our report, the summary financial report derived from the audited financial report of Edmund Rice Foundation (Australia) for the year ended 31 December 2016 is consistent, in all material respects, with the audited financial report, on the basis described in Note 1.

**Summary Financial Report**

The summary financial report does not contain all the disclosures required by Australian Accounting Standards applied in preparation of the audited financial report of Edmund Rice Foundation (Australia). Reading the summary financial report, therefore, is not a substitute for reading the audited financial report of Edmund Rice Foundation (Australia) and the auditor's report thereon.

**The Audited Financial Report and Our Report Thereon**

We expressed a qualified audit opinion on the audited financial report in our report dated 27 March 2017. The basis for our qualified opinion was, as is common with organisations of this type, it is not practical for the Edmund Rice Foundation (Australia) to maintain effective internal control over donations until their initial entry into the accounting records. Accordingly, our audit in relation to such receipts was limited to amounts recorded.

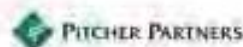
**Responsible Entities' Responsibility for the Summary Financial Report**

The responsible entities are responsible for the preparation of the summary financial report on the basis described in Note 1 to the audited financial report, to the extent applicable to the summary financial report.

Indicates if the summary financial report is derived from the audited financial report of Edmund Rice Foundation (Australia) for the year ended 31 December 2016.

Indicates if the summary financial report is derived from the audited financial report of Edmund Rice Foundation (Australia) for the year ended 31 December 2016.

# Auditors Report



with Accounting Standard AASB 1039 *Concise Financial Reports*. Our responsibility is to express an opinion on the summary financial statements based on our procedures, which were conducted in accordance with Auditing Standard ASA 810 *Engagements to Report on Concise Financial Statements*.

We believe that the audit evidence we have obtained is sufficient and appropriate to provide a basis for our audit opinion.

## *Independence*

In conducting our audit, we have complied with the independence requirements of the *Australian Charities and Not-for-profits Commission Act 2012*.

## *Basis for Qualified Opinion*

As is common with organisations of this type, it is not practical for the Edmund Rice Foundation (Australia) to maintain effective internal controls over donations until their initial entry in the accounting records. Accordingly, our audit in relation to such receipts was limited to amounts recorded.

## *Qualified Opinion*

In our opinion, except for the effects if any, of the matter described in the Basis for Qualified Opinion paragraph, the concise financial report of Edmund Rice Foundation (Australia) and its controlled entities for the year ended 31 December 2015 complies with Accounting Standard AASB 1039 *Concise Financial Reports*.

## *Matters Relating to the Electronic Publication of the Concise Financial Report*

This auditor's report relates to the financial report of Edmund Rice Foundation (Australia) and its controlled entities for the year ended 31 December 2015 included on Edmund Rice Foundation's website. The responsible entities are responsible for the integrity of Edmund Rice Foundation's website. We have not been engaged to report on the integrity of the Edmund Rice Foundation's website. The auditor's report refers only to the subject matter described above. It does not provide an opinion on any other information which may have been hyperlinked to/from these statements. If users of the financial report are concerned with the inherent risks arising from publication on a website, they are advised to refer to the hard copy of the audited financial report to confirm the information contained in this website version of the financial report.

*Pitcher Partners*

**Pitcher Partners**

*John Gavljak*  
**John Gavljak**

Partner

Dated in Sydney, this 5<sup>th</sup> day of April 2016



## Board of Directors



**MR PETER MURPHY**  
**CHAIR**

Peter is a Chartered Accountant who for the past 20 years has worked in the recruitment industry. He is widely recognised as one of Australia's leading senior executive recruiters and was recently named Australia's Best Recruiter. He has served on numerous committees for the Queensland branch of the Institute of Chartered Accountants culminating in him being the Queensland State Chairman in 2005. Peter is Co-Chairman of the St Joseph's College, Gregory Terrace Cardinals committee. He has served on several charitable organisations committees over the years and he joined the National Board for ERFA in 2012.



**MR MICHAEL FERNON**  
**DEPUTY CHAIRMAN**

Michael has extensive experience in most areas of commercial practice, particularly in relation to superannuation and funds management, corporate finance and fundraising and mergers and acquisitions. Admitted to practice in 1974, Michael has been a principal in law firms since 1977. He has also been a director of several public companies and provided extensive pro bono support. Michael has a long sporting history with St Kevin's Old Collegians. Michael was a Trustee of the former Christian Brothers' Foundation for Charitable Works.



**BR PETER CLINCH**

Peter has been a Christian Brother for 40 years. He is a trained secondary school teacher. Peter has been involved with Edmund Rice Camps since 1981. Peter has held leadership and administrative roles with the Christian Brothers and he is currently the Province Leader of the Christian Brothers Oceania Province. Prior to this role, he was a pastoral worker with people seeking asylum to Australia. Peter has completed studies in theology and spirituality and was a Trustee of the previous Christian Brothers Foundation for Charitable Works.



**MS CHRISTINA LONGMIRE**  
**TREASURER**

Christina is a certified accountant who has worked within the industry for over 18 years. Christina brings a wealth of experience to Edmund Rice Education Australia as the College Accountant to St Joseph's College, Manager of Accounting Services for the Trustees of The Christian Bros (QLD & NT). She has a Bachelor of Commerce with Griffith University and is a member of CPA Australia, NTAA (National Tax & Accountant's Association), ASBA (Association of School Business Administrators Australia) and CEBA Inc (Catholic Education Business Administrators Victoria).



**MR ANTHONY COATES**

Tony is a company director and consultant providing management and strategic advice to private and public sector clients. He has been involved in managing voluntary organisations for over 25 years. Tony joined the Board in 2012. He holds a Bachelor of Building from UNSW (majoring in Quantity Surveying) and is a past member of Australian Institute of Quantity Surveyors. Tony has extensive experience in Australian banking and property industries.



MR SIMON LOCKYER

Simon is a past student of St Joseph's College, Gregory Terrace. He has an exceptional reputation in the not-for-profit sector throughout Australia. Simon was a Founding Director of a very prominent Queensland Charity called Youngcare. He is also co-founder and Marketing Director of Everyday Hero, an Australian pioneer of Software as a Service fundraising technologies. Simon has an extensive background in assisting foundations and charities to build a strong strategic and visioning platform.



MR MARK SAWLE

Mark is Headmaster of Aquinas College in Perth, Western Australia. He has close to 30 years' experience in school education in teaching and educational leadership and holds a Master's Degree in Educational Management. Mark is a member of the Australian Council for Educational Leaders and in Western Australia the Catholic Secondary Principals Association and the Private Schools Association. Within Aquinas Mark chairs the College Leadership Team and Board Education Policy Committee.

The Edmund Rice Foundation is active in *planning, monitoring and evaluating* the projects it supports.



MS MARIANNE ROUX

Marianne has over 20 years' experience as a Senior People and Culture Executive, a Senior OD and Leadership consultant, an Executive Coach and a Business School Lecturer. She is the Principal of Silverstone Edge Consulting and her previous roles included Managing Director of Redstone Consulting Partners and Executive General Manager of People and Culture at Cricket Australia. Marianne has worked for organisations including Mercer, Deloitte, Stellenbosch Business School, Woolworths Foods, PwC and Accenture. She has global experience including in Africa and Asia and her NFP experience includes work with the Cancer Council of Australia, YSAS and Yalari. Marianne has also worked in leadership development for World Vision (SEA) and Hagar (Cambodia).



MR ALAN ZAMMIT AM

Alan is Managing director of UPDM working in urban, regional and community development. He offers corporate and property advisory services with an emphasis on strategic planning and corporate governance. Alan has been a director of Rouse Hill Infrastructure and an independent member of the Audit and Risk Committee of the NSW Land and Housing Corporation. He is chair of the Salvation Army Western Sydney Advisory Board and the Parramatta Diocese Property Council. Alan has had previous terms as Chair of St Gabriel's School for the Hearing Impaired and as director and treasurer of the Westmead Medical Research Foundation.



## 2016 Foundation Chapters

### Queensland Chapter

Chair: Mr Edward Phelan

### Victorian Chapter

Chair: Mr Neil Hay

## 2016 Supporter Organisations

### 500 Supporters' Group

Chair: Mr Patrick O'Brien

### Project Kenya

Director: Mr John McKenna

### Brisbane Rainbow Committee

Co-Founders: Ms Pepita Hampson and Ms Sam Baker

### Mary Rice Committee

Co-Founders: Ms Louise Allison and Ms Sally Burgoyne

### Terrace Timor Network

President: Mr Paul Higgins

### Zimele

Chair: Mr Tom Purcell

## 2016 Supporter Schools

Ambrose Treacy College	Brisbane QLD
Aquinas College	Melbourne
Aquinas College	Perth WA
Catholic Agricultural College	Bindoon WA
Christian Brothers' College	Adelaide SA
Christian Brothers' College	Fremantle WA
Ignatius Park College	Townsville QLD
Indooroopilly Montessori Children's House	Brisbane QLD
Parade College	Melbourne VIC
Rostrevor College	Woodforde SA
St Bernard's College	Melbourne VIC
St Brendan's College	Yeppoon QLD
St Columban's College	Caboolture QLD
St Edmund's College	Ipswich QLD
St James' College	Brisbane QLD
St Joseph's College	Geelong VIC
St Joseph's College Gregory Terrace	Brisbane QLD
St Joseph's Nudgee College	Brisbane QLD
St Kevin's College	Melbourne VIC
St Laurence's College	Brisbane QLD
St Patrick's College	Ballarat VIC
St Patrick's College Shorncliffe	Brisbane QLD
St Patrick's College Strathfield	Sydney NSW
St Paul's College	Adelaide SA
St Pius X College	Sydney NSW
St Virgil's College	Hobart TAS
Trinity College	Perth WA

## ERFA Office

Treacy Centre | 126 The Avenue  
P.O. Box 819  
Parkville | VIC | 3052

Phone: +61 7 3621 9649  
Fax: +61 7 3621 9688  
Email: [info@erf.org.au](mailto:info@erf.org.au)

## Foundation Staff

Chief Executive Officer: Mr Anthony Ryan

General Manager: Br Bill Wilding

Strategic Development Manager:  
Ms Emily Faller

National Donor Relations Manager:  
Ms Louise Allison

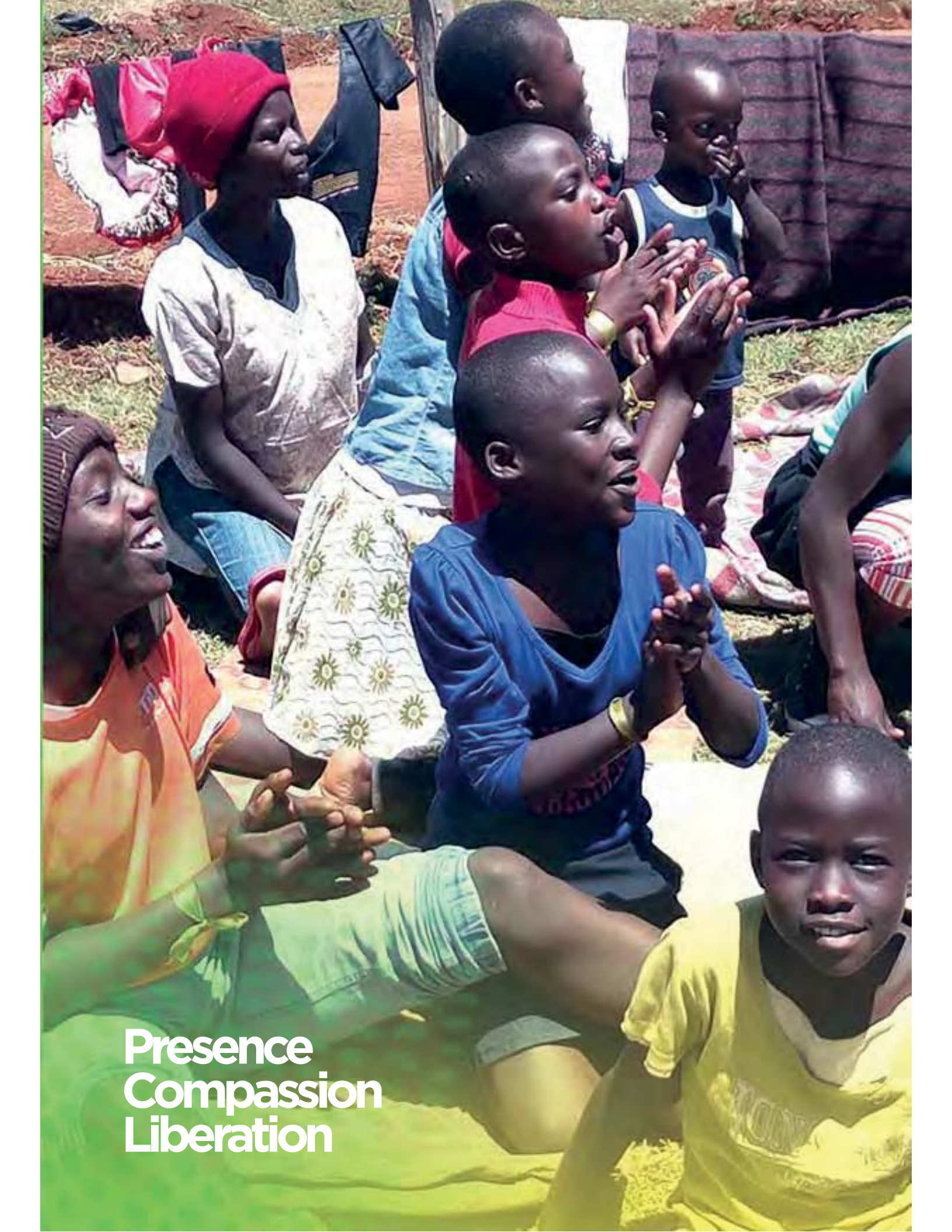
Compliance Officer: Br Robert Stone

Personal Assistant: Ms Arlene Clark  
(until August 2016)

Executive Assistant: Ms Finley Stupkin  
(from September 2016)

[www.erf.org.au](http://www.erf.org.au)





Presence  
Compassion  
Liberation





**Edmund Rice**  
FOUNDATION AUSTRALIA

**Annual Report**  
**2016**

**Liberating  
Lives**