



20 *Impact Report* 20



Edmund Rice
FOUNDATION AUSTRALIA

Liberating Lives Through Education

**Liberating Lives
Through Education**

VISION

2020 at a glance

In a year plagued by a global pandemic, we rose to the challenge. ERFA:

Our vision is for access to quality education and **lifelong learning opportunities for all**, supporting empowered communities that determine their own futures.

Worked in

6 countries

Australia, Kenya, India, South Sudan, Timor Leste and The Philippines



Directly impacted the lives of

47,924 people

and hundreds of thousands more indirectly



Disbursed approved funding of

\$1,892,490

to support programs globally



Partnered in delivering

25 programs



How we help

2020 dealt many harsh blows. Despite this, through ERFA Partner Programs:

18,456
children

received education and health services



359 people

living with disability were directly supported



19,727
women

were supported in economic empowerment, health, vocational training and mentoring



2,039
employed

people in paid and volunteer work directly supporting communities



STORIES *of inspiration*

The COVID-19 pandemic has created the most significant disruption of education systems in the world's history.

Australia

Developing Community Leaders Initiative

Fostering future community leaders

The Edmund Rice Centre WA's Developing Community Leaders Initiative (DCLI) provides a platform for young people of Culturally and Linguistically Diverse backgrounds with opportunities to learn about and take the lead in community programs and initiatives. Emerging Leader, Derek Nannup, is an active participant in the program, his community and the wider Australian community. A proud Whadjuk Noongar man, Derek has dedicated his life to strengthening cultural connections for Aboriginal young people.

Through DCLI, Derek became a member of the Mirrabooka Police District Youth Advisory Group and several reference groups, including the Aboriginal Suicide Prevention Action Plan Steering Committee. Derek was also recently elected to the Board of the Youth Affairs Council of Western Australia. In addition, he has worked with the Wungening Aboriginal Corporation and the Aboriginal Health Council of WA and established the Boorloo Indigenous Youth Yarning Circles.

His determination to break the negative cycle within young Aboriginal people has inspired his remarkable life. In recognition of his efforts, Derek was awarded the WA Young Person of the Year. This is the second year in a row an Emerging Leader from DCLI has won this prestigious award. ERFA is proud to support indigenous outreach and youth leadership programs in partnership with the Edmund Rice Centre at Mirrabooka.



Nairobi, Kenya

Mary Rice Centre Kenya

Empowering students and carers

Mary Rice Centre Kenya (MRCK) is a transitional centre providing services for children with special needs and their families from Nairobi's Kibera slum. Following lockdown procedures imposed by the Kenyan Government, children attending the Centre reported a regression in physical and educational development. So, when the Government declared disability-based organisations as essential service providers in June, MRCK quickly resumed their work.

Children like Faith* resumed physical therapy. Her mother was trained in basic therapy, ensuring it could continue from home. Teachers also worked with the children individually and included parent and guardian participation, enabling carers to provide support from home. In addition, teachers made in-home follow-ups with the children to support their progress.

MRCK also extended support to students undertaking vocational classes. The Centre sourced and distributed materials to students to continue their practice while at home. Importantly, students were encouraged back into the Centre for one-on-one guidance with their teacher to keep their studies on track.

** Not her real name*

Australia

Cross-cultural conversations

Making meaningful connections

With the impact of COVID-19 felt globally, ERFA's powerful school immersions program shifted online. Parade College Victoria and Edmund Rice Karibu Group in Nairobi participated in a cross-cultural conversation. Their discussion sparked new insights into the vast differences and common struggles the communities face.

For the young Australian students, the meeting was a candid opportunity to gain a perspective of the unequal effects of the pandemic. While social distancing and regular testing became a new normal in Victoria, many Nairobi residents live in confined spaces, unable to social distance, learn or work remotely. During the discussion it was discovered that a COVID-19 test in Kibera cost around AUD \$130, equivalent to a full month's wage and enough to feed a family for a month.

Despite vast differences, both groups were able to find common ground in the struggles their communities are facing. Whilst not the same as visting in person, online "immersions" can be a powerful tool in connecting Australian students with the people of Africa. Students are able to learn and become passionate about the pursuit of social justice and being an agent for change in their own community.



Dehli, India

Youth Advocates for Social Harmony (YASH) project

Educational out-reach

Through PRATyEK and the YASH project, ERFA provides support to children's groups hailing from slum situations in India. The YASH project revolves around genuine child participation for child-led advocacy, the provision of mental health sessions, and sustainable development workshops. The project also provides academic support to students, with free tuition classes aligned with their school curriculum.

In 2020, connections quickly shifted online following imposed lockdowns to help contain the spread of COVID-19. Access to smartphones and laptops is still a far-fetched dream for children who belong to vulnerable communities, so this was no easy feat. PRATyEK provided all YASH groups with a tablet to help them continue their learning and stay connected. Dry rations were also provided to families in need.

In reflection of their tremendous hard work, all students passed their academics with flying colours. Incredibly, six students scored marks above 75%. Enterprising YASH children even raised funds during COVID-19 by selling homemade masks to purchase and distribute dry rations to people in need.

LOOKING *back*

The Evolution of ERFA

As the successor of the Christian Brothers' Foundation for Charitable Works (CBFCW), 2021 will mark ten years for ERFA as the national entity. In this decade, ERFA has undergone an evolution to become a true international NGO with the UN Sustainable Development Goals at the heart of our work.

The Constitution, which governs the way ERFA operates, was formally amended in 2013. It provided a shared blueprint to guide ERFA's transformation from an entity that was primarily focused upon fundraising towards one focused on sustainable development.

Achieving the Constitutional objective to obtain the Australian Council for International Development (ACFID) membership was a significant milestone.

The Australian Council for International Development (ACFID) is the peak body for Australian non government organisations (NGOs) involved in international development and humanitarian action.

2011



Edmund Rice
FOUNDATION AUSTRALIA

**ERFA established
as a national entity**



**\$1.3m
contributed to
development projects**

2013



**\$1.8m
program funding**



**ERFA granted
trusteeship of
overseas and
domestic aid funds**



First AGM held

**Appointment of
Chief Executive
Officer
for the new entity**



**\$1.9m program
funding and support**



**ACFID
MEMBER**

**Full ACFID
membership achieved**

**Gone Fishing Immersion
to East Africa introduced**



2012

2014

2015



\$574k raised through fundraising activities

\$2.37m funds to international development

Commenced capacity-building towards **DFAT accreditation**



Training conducted in Africa to support program partners compliance with the ACFID Code of Conduct

2017



10 countries



35 programs



141,000 people directly impacted



\$2.4m program funding

Appointment of new Chief Executive Officer

Programs Director role created to support ERFAs evolution towards Asset Based Community Development (ABCD)

2019



\$3.3m program funding and support

ERFA's branch office opened in Marsabit Plaza, Nairobi

Best Foot Forward launched



Gone Trekking experience to PNG introduced



Workplace giving launched



\$2.96m raised



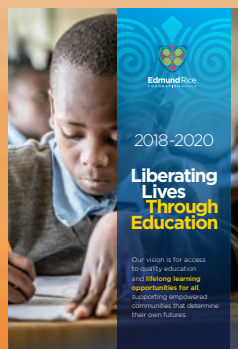
\$2.59m program funding and support

2016



\$2.648m program funding and support

New Strategic Plan
Liberating Lives through Education (2018-2020)



ERFA's Kenya branch office registered

2018



19,000 women supported in health, and training



2,039 people employed



500 Supporters 'virtual' Luncheons raised \$750,000



COVID pivot
Kenya branch conducted **capacity-building** with 11 program partners across Africa.

ERFA facilitated **Community Development in Practice** online sessions connecting partner programs from 8 countries.



2020



Since achieving ACFID membership, ERFA has increased concentration on capacity-building of our own organisation, and of our implementing partner organisations, to meet the criteria and adopt best-practice outlined in the ACFID Code. Through shared learning, ERFA has strengthened our program partnerships and program delivery to ensure the work undertaken has the best possible chance of empowering communities and creating lasting change. We've established robust policies and processes around development activities, contributing to the realisation of human rights and the delivery of Sustainable Development Goals.

We've also sought to increase our impact in other ways. Since the first immersion in 2014, ERFA's 'Gone Fishing' and subsequent 'Gone Trekking' experiences have provided meaningful connections with the people of Africa and Papua New Guinea. Over 70 Australian business leaders have embraced this opportunity, gaining understanding and insight with lasting impact. ERFA's hope is to inspire, challenge and engage each participant to be a life-long agent for change.

ERFA's Strategic Plan, *Liberating Lives through Education* (2018-2020) introduced some significant shifts for the organisation. Taking inspiration from Edmund Rice, who devoted his life to educating those made poor, ERFA has returned to its roots, to the power that lies in education. We've sharpened our focus, recognising now more than ever, appropriate education brings opportunities to build essential life skills and addresses inequality.

We recognise that
with the right kind
of support, lives
can be changed.
**Liberating Lives
through Education**
is our contribution
to this change.

ERFA continues to seek out new funding opportunities to complement the incredibly generous support of our private donors, supporter groups and the extraordinary commitment of the EREA schools' network and their alumni, who have remained our most significant contributors over the decade and, in many cases, longer. Their commitment to lifelong giving was never more evident than in 2020. As the COVID-19 pandemic swept the globe, our supporters dug deep, making it possible for ERFA to continue providing funding and support to program partners in new and innovative ways.

ERFA is committed to carrying on the the legacy of the Christian Brothers' work in global mission and the tradition of Edmund Rice.



LOOKING *ahead*

Towards sustainable development

VISION

Our vision is for access to quality education and lifelong learning opportunities for all, supporting empowered communities that determine their own futures.

PURPOSE

ERFA's purpose is to support the education of the most vulnerable. Our focus on education spans from life-changing education for children to financial literacy, farming, trades, health and human rights for adults, leaving communities empowered and self-sustaining.

VALUES

Presence

- Relationships built on integrity, mutual respect, trust, accountability and transparency
- Standing in solidarity with the disadvantaged and those living in poverty
- Belief in the equality and dignity of all persons

Compassion

- Our fundamental response is compassion which awakens us to our responsibilities and compels us to take action to eradicate poverty and suffering
- Being sensitive to and informed by the culture, experience and hopes of local people

Liberation

- Empowerment through education which promotes human development and increases the capacities of local people to break the poverty cycle and determine their own futures.

HOW YOUR donations help

Your donations go to creating lasting impacts for communities

Thank you

We work with the poorest of communities, helping them to **create solutions** for what they've told us are their **biggest needs**. We work to **safeguard your funds** from the risk of corruption, human rights abuses, and terrorism.



ERFA's approach to programming

ERFA's core focus is on the UN Sustainable Development Goal #1, to end poverty in all its forms everywhere and ERFA seeks to achieve this through SDG #4, Ensure inclusive and equitable quality education and promote lifelong learning opportunities for all.

In order to achieve our vision, ERFA's priority is to fund community education projects with a clear goal and exit strategy to ensure empowering, sustainable outcomes. We subscribe to a community development approach where the community has full involvement and leadership in planning, developing, delivering and evaluating community initiatives. ERFA also partners in the delivery of community-based projects where partner organisations deliver skillbuilding initiatives in specific areas such as literacy, vocational training, microfinance, human rights and advocacy training.

ERFA does not partner in delivery of projects for evangelisation or partisan politics. ERFA also has robust policy and process in place so that we, and our partners, do not knowingly or unwittingly support terrorist activity.

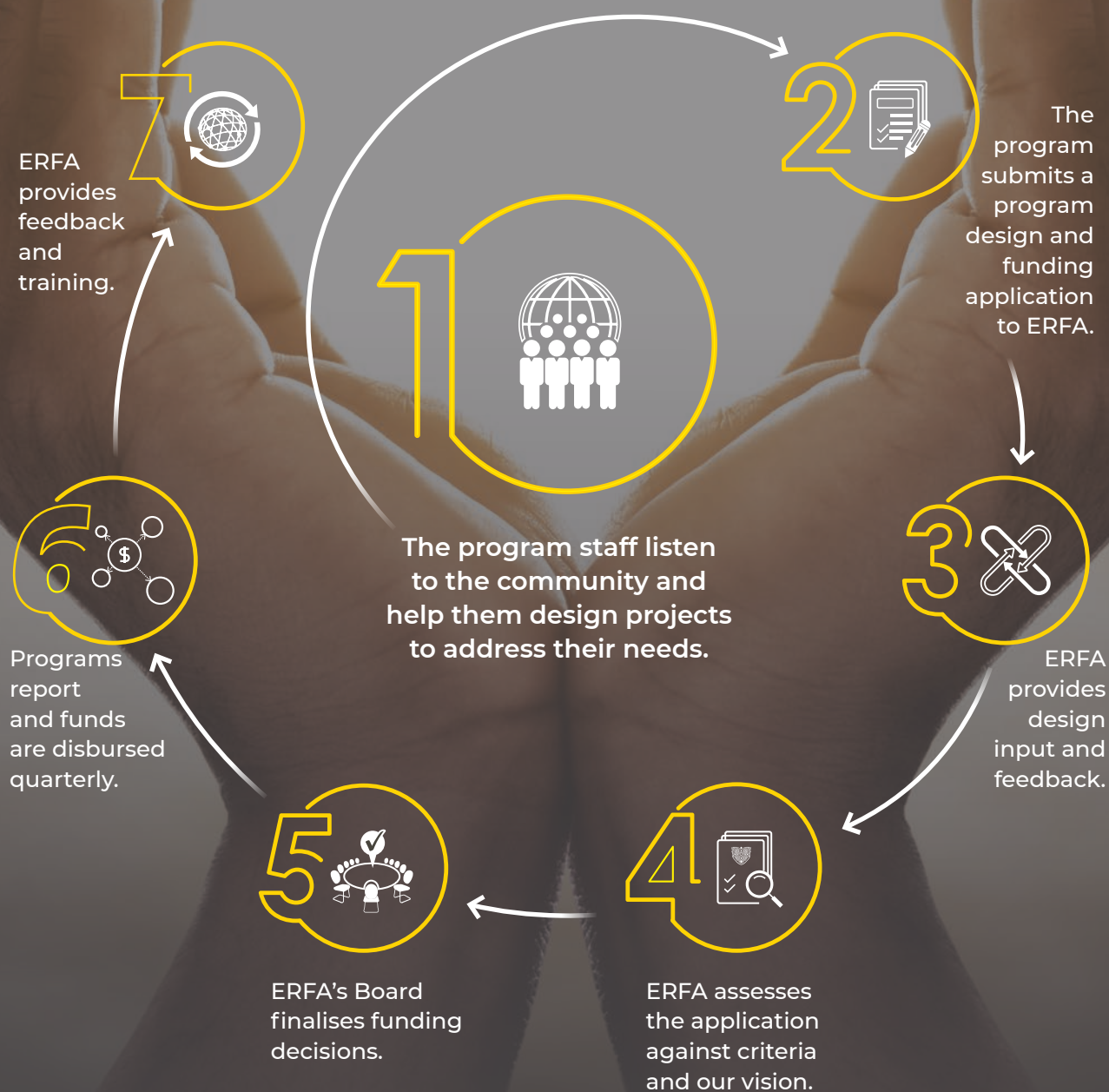
ERFA does not fund welfare activity or provide support to individuals or families. This does not apply to humanitarian assistance in emergency situations which ERFA will provide from time to time.

ERFA's aim is for whole communities to become stronger and more confident in controlling or exerting influence over the issues affecting their lives.

PROGRAM *funding*

Making a lasting impact

ERFA helps to design projects that are community-owned. We seek to harness the existing assets, capacities, and strengths of a community towards achieving sustainable community-development.





Edmund Rice FOUNDATION AUSTRALIA



Liberating Lives Through Education

EDMUND RICE FOUNDATION
AUSTRALIA

ERFA Office

Phone • 07 3621 9649

Email • info@erf.org.au

Executive Office

PO Box 130

Virginia BC QLD 4014

ABN 28 153 110 055

www.erf.org.au



ACFID
MEMBER

Edmund Rice Foundation (Australia) is a signatory to the ACFID Code of Conduct, which is a voluntary, self-regulatory sector code of good practice. As a signatory we are committed and fully adhere to the ACFID Code of Conduct, conducting our work with transparency, accountability and integrity. To lodge a complaint against our organisation, please email the CEO at ceo@erf.org.au. Our complaints handling policy can be found on our website. If you are not satisfied with the response and believe our organisation has breached the ACFID Code of Conduct, you can lodge a complaint with the ACFID Code of Conduct Committee at code@acfid.asn.au. Information about how to make a complaint can be found at www.acfid.asn.au.

Names of some of the people in this report have been changed to protect their privacy.

Images in this report courtesy of program staff and photographer Mark Chew
www.markchew.com.au

